

Style: 001

Season: 1

Description: Retro Track Jacket

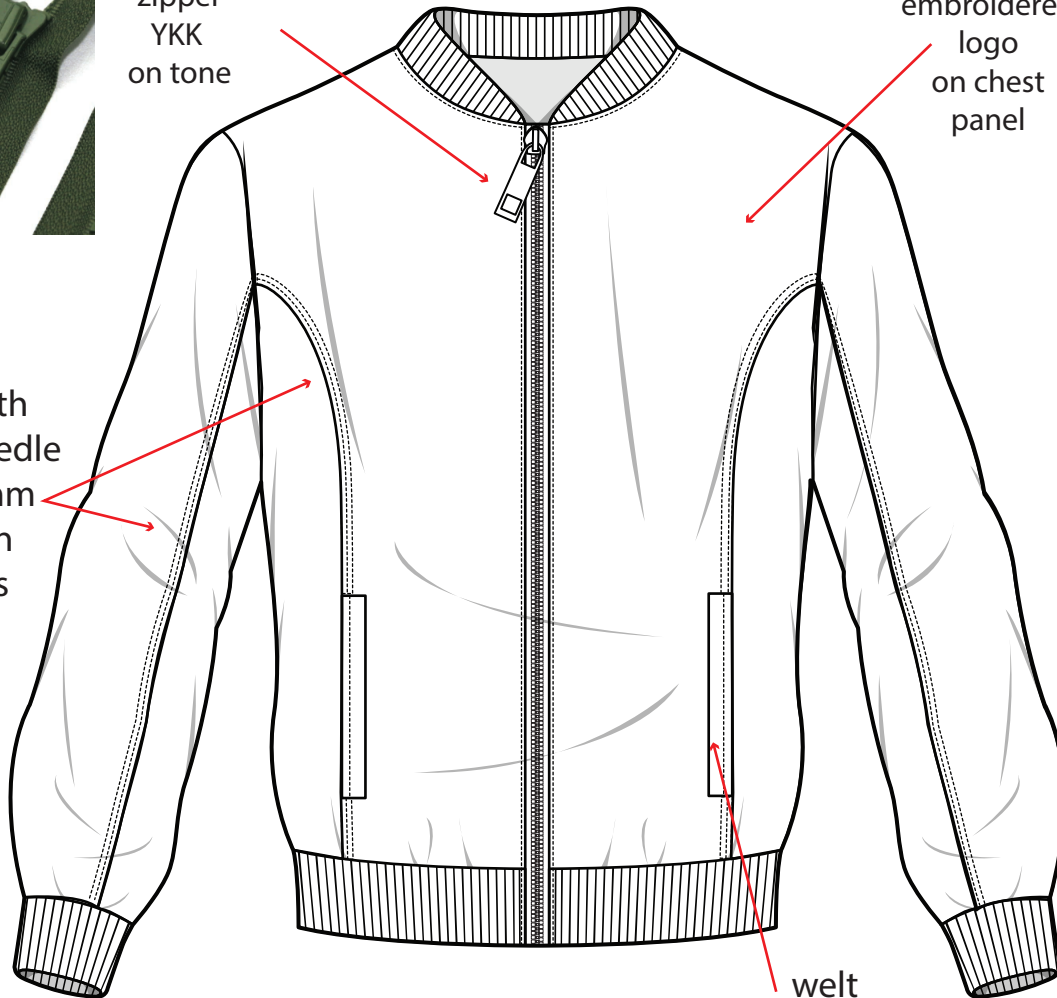
Combo: FIRST SAMPLE



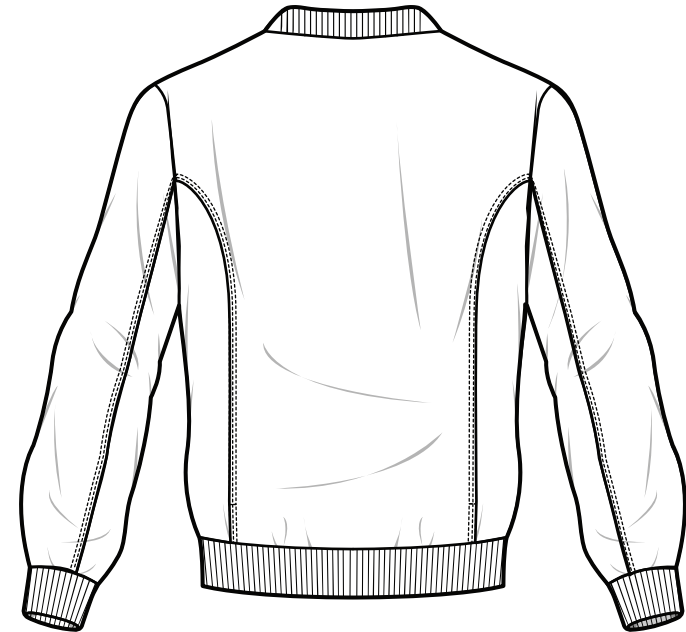
vislon  
zipper  
YKK  
on tone

embroidered  
logo  
on chest  
panel

seam with  
double needle  
stitch 5mm  
between  
needles



welt  
pocket



Back following same  
design as front  
and sleeves

\*Please check Rib design on next page.



|                                 |                     |  |
|---------------------------------|---------------------|--|
| Style: 001                      | Season: 1           |  |
| Description: Retro Track Jacket | Combo: FIRST SAMPLE |  |



Store No. [REDACTED] 29939

Embossed Logo

Please look for a nice quality zipper puller.

A logo will be embossed (logo still in process).


The zipper puller needs to be coated on same color as zipper.


|                                 |                     |  |
|---------------------------------|---------------------|--|
| Style: 001                      | Season: 1           |  |
| Description: Retro Track Jacket | Combo: FIRST SAMPLE |  |

For fabric please follow reference 95% viscose %5 Elastane.


it has to have a retro feeling of 70's track suits.

(see last page for reference)






REAL WHITE



19-4316 TCX



16-0945 TCX

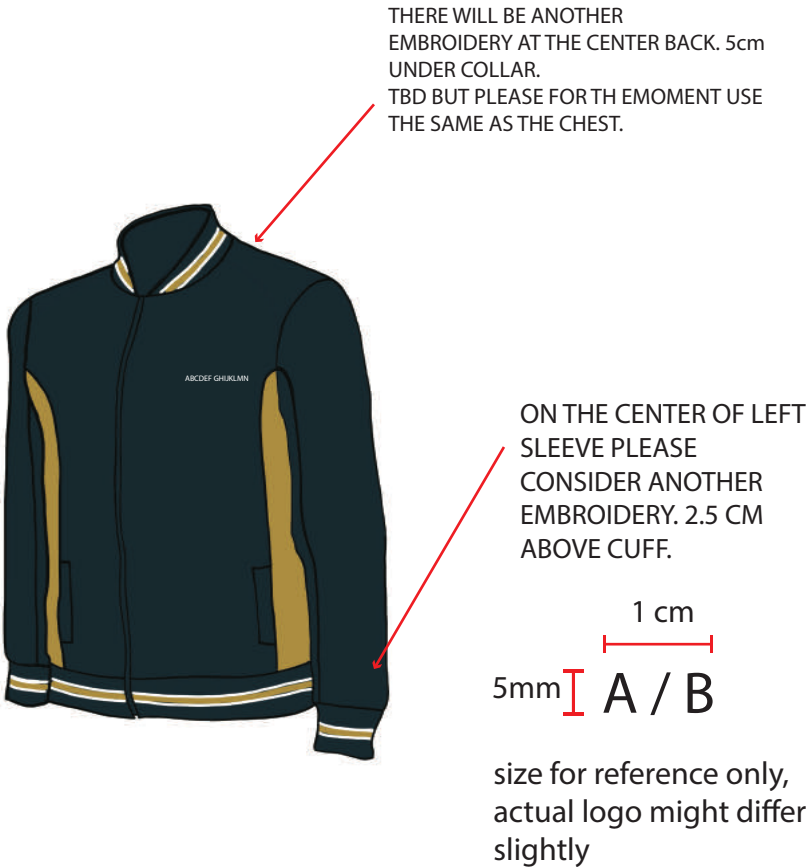
PLEASE PROCEED WITH SAMPLES IN EUROPEAN SIZE M

|                                 |                     |  |
|---------------------------------|---------------------|--|
| Style: 001                      | Season: 1           |  |
| Description: Retro Track Jacket | Combo: FIRST SAMPLE |  |



EMBROIDERED LOGO IN 16-0945 TCX  
(placed on left side chest panel)

MAKE SURE EMBROIDERY IS DENSE AND  
WITH VERY GOOD & CLEAR DEFINITION



Embroidery at back, chest and sleeve.  
All embroideries in same color.

|                                 |                     |  |
|---------------------------------|---------------------|--|
| Style: 001                      | Season: 1           |  |
| Description: Retro Track Jacket | Combo: FIRST SAMPLE |  |

## FIT REFERENCES



PLEASE PROCEED WITH SAMPLES IN EUROPEAN SIZE M



|                                 |                     |  |
|---------------------------------|---------------------|--|
| Style: 001                      | Season: 1           |  |
| Description: Retro Track Jacket | Combo: FIRST SAMPLE |  |



place princess cut seam 10 cm from side seam.

Style: 001

Season: 1

Description: Retro Track Jacket

Combo: FIRST SAMPLE

## ZIP SWEATSHIRT

## Measure detail

| Measure                         |    | XS | S    | M    | L    | XL   | XXL  |      | Comment |                 |
|---------------------------------|----|----|------|------|------|------|------|------|---------|-----------------|
| BSB - Back from shoulder length | CM | X  | 1.0  | 1.0  | 85.0 | 87.0 | 89.0 | 91.0 | 93.0    | (M)             |
| AA - 1/2 Chest round            | CM | X  | 1.0  | 1.0  | 45.0 | 48.0 | 51.0 | 54.0 | 57.0    |                 |
| AV - 1/2 Bottom round           | CM |    | 1.0  | 1.0  | 37.0 | 40.0 | 43.0 | 46.0 | 49.0    |                 |
| AVP - 1/2 Bottom round pattern  | CM |    | 0.0  | 0.0  | 30.0 | 32.0 | 34.0 | 36.0 | 38.0    | above PB        |
| AST - 1/2 bottom round stretch  | CM |    | 1.0  | 1.0  | 41.0 | 46.0 | 50.0 | 54.0 | 57.0    |                 |
| SA - Shoulder length            | CM | X  | 0.5  | 0.5  | 12.5 | 13.0 | 13.5 | 14.0 | 14.5    |                 |
| SH - Armhole height             | CM | X  | 0.5  | 0.5  | 19.5 | 21.0 | 22.0 | 23.0 | 25.0    |                 |
| CF - Front breadth              | CM | X  | 0.5  | 0.5  | 35.0 | 36.0 | 38.0 | 40.0 | 42.0    | at 1cm from Top |
| CB - Back breadth               | CM | X  | 0.5  | 0.5  | 36.0 | 38.0 | 40.0 | 42.0 | 44.0    | at 1cm from Top |
| ND - Neck width                 | CM | X  | 0.5  | 0.5  | 18.0 | 18.5 | 19.0 | 19.5 | 20.0    |                 |
| RF - Front neckline depth       | CM | X  | 0.5  | 0.5  | 8.0  | 8.5  | 9.0  | 9.5  | 10.0    |                 |
| RB - Back neckline depth        | CM |    | 0.25 | 0.25 | 1.0  | 1.0  | 1.0  | 1.0  | 1.0     |                 |
| NH - Head passage               | CM | X  | 1.0  | 1.0  | 30.0 | 30.0 | 30.0 | 30.0 | 30.0    |                 |
| OCB - Back middle collar height | CM |    | 0.25 | 0.25 | 1.0  | 1.0  | 1.0  | 1.0  | 1.0     |                 |
| SL - Sleeve length (long)       | CM | X  | 1.0  | 1.0  | 63.0 | 64.0 | 65.0 | 66.0 | 68.0    |                 |
| SNW - 1/2 Upper sleeve width    | CM | X  | 0.5  | 0.5  | 17.0 | 18.5 | 19.5 | 20.5 | 21.5    |                 |

|                                    |    |   |      |      |      |      |      |      |      |      |                 |
|------------------------------------|----|---|------|------|------|------|------|------|------|------|-----------------|
| CB - Back breadth                  | CM | X | 0.5  | 0.5  | 36.0 | 38.0 | 40.0 | 42.0 | 44.0 | 46.0 | at 5cm from Top |
| ND - Neck width                    | CM | X | 0.5  | 0.5  | 18.0 | 18.5 | 19.0 | 19.5 | 20.0 | 20.5 |                 |
| RF - Front neckline depth          | CM | X | 0.5  | 0.5  | 8.0  | 8.5  | 9.0  | 9.5  | 10.0 | 10.5 |                 |
| RB - Back neckline depth           | CM |   | 0.25 | 0.25 | 1.0  | 1.0  | 1.0  | 1.0  | 1.0  | 1.0  |                 |
| HH - Head passage                  | CM | X | 1.0  | 1.0  | 30.0 | 30.0 | 30.0 | 30.0 | 30.0 | 30.0 |                 |
| OCB - Back middle collar height    | CM |   | 0.25 | 0.25 | 1.0  | 1.0  | 1.0  | 1.0  | 1.0  | 1.0  |                 |
| SL - Sleeve length (long)          | CM | X | 1.0  | 1.0  | 63.0 | 64.0 | 65.0 | 66.0 | 67.0 | 68.0 |                 |
| SNW - 1/2 Upper sleeve width       | CM | X | 0.5  | 0.5  | 17.0 | 18.5 | 19.5 | 20.5 | 21.5 | 22.5 |                 |
| SNW - 1/2 Bottom sleeve (long)     | CM | X | 0.5  | 0.5  | 9.0  | 9.5  | 10.0 | 10.5 | 11.0 | 11.5 |                 |
| SHH - Sleeve over binding height   | CM |   | 0.0  | 0.0  | 4.0  | 5.0  | 5.0  | 6.0  | 6.0  | 6.0  |                 |
| SHH - Bottom height (b or binding) | CM |   | 0.0  | 0.0  | 4.0  | 5.0  | 5.0  | 6.0  | 6.0  | 6.0  |                 |
| FP - Front pocket width            | CM |   | 0.0  | 0.0  | 1.0  | 1.0  | 1.0  | 1.0  | 1.0  | 1.0  |                 |
| HP - Right pocket height           | CM |   | 0.0  | 0.0  | 13.5 | 14.0 | 14.5 | 15.0 | 15.5 | 16.0 |                 |
| PI - Pocket position from bottom   | CM |   | 0.0  | 0.0  | 7.5  | 7.5  | 7.5  | 7.5  | 7.5  | 7.5  | (U) above PB    |
| SB - Shoulder incline degree       | CM |   | 0.1  | 0.1  | 21.0 | 21.0 | 21.0 | 21.0 | 21.0 | 21.0 |                 |